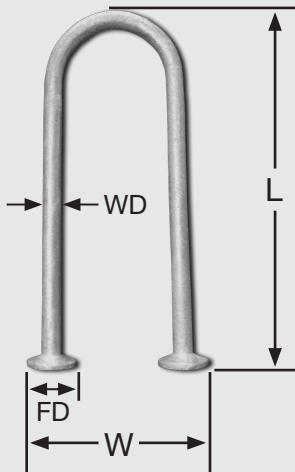


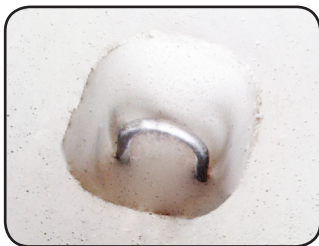
# Patterson R-ANCHOR



FOR  
**REDI-ROCK®  
BLOCKS**

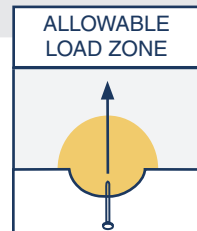


- Standard finish is **Hot-Dip Galvanized**. Provides long-term corrosion resistance.
- Fits in **Standard Redi-Rock Recess Member**.
- Anchors have a 4,690 lb. capacity in 1,000 PSI concrete with a 4:1 Safe Working Load (4:1 SWL).



### 3/8" x 7" RECESSED R-ANCHOR

Product Code	WD Wire Diameter	L Length	W Width	FD Foot Diameter	Safe Working Load 1,000 PSI 4:1 SWL (lbs)
LRA387G	3/8"	7"	3-1/4"	1"	4,690



BUY ONLINE!

[WWW.PATTERSON-ONLINE.COM](http://WWW.PATTERSON-ONLINE.COM)

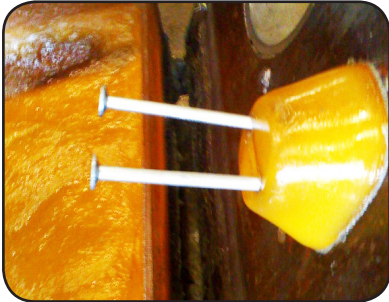
**(800) 332-7090**



**PATTERSON**  
Your Single Source Supplier

# INSTALLATION OF R-ANCHOR

## INSIDE FORM

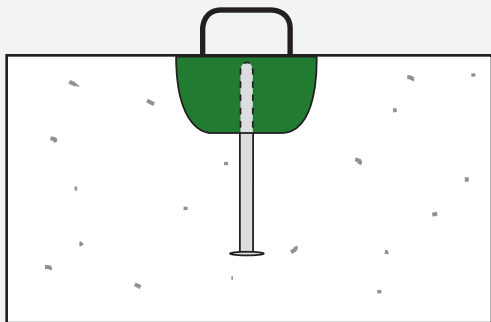


- Use existing **Redi-Rock Recess Member**.
- Note - Recess Members that were designed for lift loops may require some modification to slot in recess member.



- Use **Patterson Recess Member (LRRM38)**
- Has two 1/2" Coil Nuts cast-in for bolting to form using two 1/2" x 2" Coil Bolts (sold separately).

## WET-SET



Use Patterson Recess Member with **Optional Mounting Handle**

BUY ONLINE!

[WWW.PATTERSON-ONLINE.COM](http://WWW.PATTERSON-ONLINE.COM)

**(800) 332-7090**



**PATTERSON**  
Your Single Source Supplier